

# COLOUR GUIDE FOR REGISTRATION

We periodically get questions from new breeders on how to register their Milking Shorthorns as it relates to colour codes. Milking Shorthorns come in a variety of colour combinations, so this guide will give you an idea of how to register the colour of your calves.

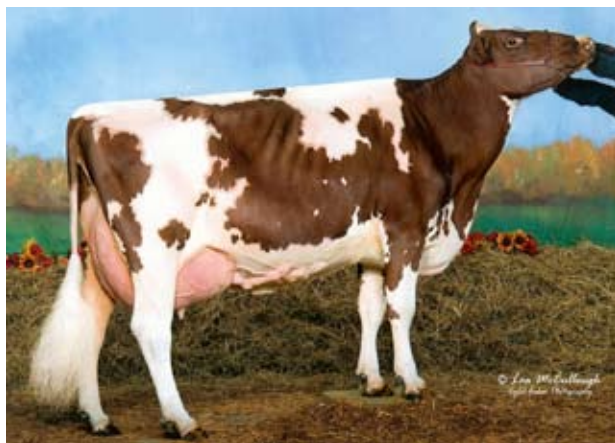
Note: Animals with colours that aren't shown here and that are deemed non-breed typical colours (ie. Black, Grey, Blue Roan, etc) will be registered at a maximum of 50% purity.



**RED**



**RED with WHITE MARKINGS**



**RED AND WHITE**



**WHITE**



**DARK ROAN**



**LIGHT ROAN**



**ROAN**

## **NON-BREED CHARACTER COLOUR**



**BLACK / BLACK & WHITE**



**BLUE ROAN**